

CL | A/C
(BALLAST
OVERRIDE)

A45

LED CORN LAMPS



TECHNICAL SPECIFICATIONS:

- :: Input voltage: 120~277V AC
- :: CCT: 3000K and 5000K
- :: CRI: >80
- :: Lamp base: E26 Medium Base, E39 Mogul Base for 36W, 45W, 54W
- :: Beam angle: 360°
- :: Operating Temp: 4°F~113°F
- :: 5-year warranty

APPLICATIONS:

- :: Ideal for retrofitting existing HID highbay, shoebox, flood light or wall pack fixtures
- :: Can be used in enclosed luminaires



LED CORN LAMPS

CATALOG NO.	WATTS	BASE	LUMENS	COLOR TEMP	REPLACEMENT RANGE
CL-HL-14W-50K-E26	14W	E26	1820LM	5000K	30~50 MH
CL-HL-14W-30K-E26	14W	E26	1820LM	3000K	30~50 MH
CL-HL-18W-50K-E26	18W	E26	2340LM	5000K	50~60 MH
CL-HL-18W-30K-E26	18W	E26	2340LM	3000K	50~60 MH
CL-HL-27W-50K-E26	27W	E26	3510LM	5000K	50~70 MH
CL-HL-27W-30K-E26	27W	E26	3510LM	3000K	50~70 MH
CL-HL-36W-50K-E26	36W	E26	4680LM	5000K	50~100 MH
CL-HL-36W-30K-E26	36W	E26	4680LM	3000K	50~100 MH
CL-HL-36W-50K-E39	36W	E39	4680LM	5000K	50~100 MH
CL-HL-36W-30K-E39	36W	E39	4680LM	3000K	50~100 MH
CL-HL-45W-50K-E39	45W	E39	5850LM	5000K	70~100 MH
CL-HL-45W-30K-E39	45W	E39	5850LM	3000K	70~100 MH
CL-HL-54W-50K-E39	54W	E39	7020LM	5000K	70~125 MH
CL-HL-54W-30K-E39	54W	E39	7020LM	3000K	70~125 MH

E26-ENLARGER

ENLARGES E26 BULB TO BE USED IN E39 SOCKET

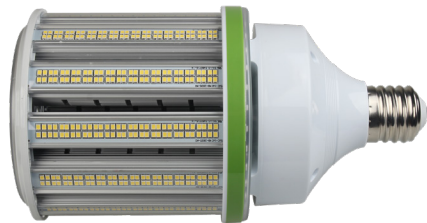
CL



CL-HL-75W-E39



CL-HL-100W-E39



CL-HL-125W-E39

TECHNICAL SPECIFICATIONS:

- :: Input voltage: 120~277V AC
- :: CCT: 3000K and 5000K
- :: CRI: >80
- :: Lamp base: E39 Mogul Base
- :: Beam angle: 360°
- :: Operating Temp: 4°F~113°F
- :: 5-year warranty

APPLICATIONS:

- :: Ideal for retrofitting existing HID highbay, shoebox, flood light or wall pack fixtures
- :: Can be used in enclosed luminaires



CL-HL-125W-50K-E39-NRW
Directional Beam
Suitable for High Bay Lights



CL-PT2-40W-E39

Reversible Mogul Base



Improved heat sink

LED on the bottom as well to provide 360° illumination

LED CORN LAMPS

CATALOG NO.	WATTS	BASE	LUMENS	COLOR TEMP	REPLACEMENT RANGE
CL-HL-75W-50K-E39	75W	E39	9750LM	5000K	100~125 MH
CL-HL-75W-30K-E39	57W	E39	9750LM	3000K	100~125 MH
CL-HL-100W-50K-E39	100W	E39	10200LM	5000K	100~175 MH
CL-HL-100W-30K-E39	100W	E39	10200LM	3000K	100~175 MH
CL-HL-125W-50K-E39	125W	E39	16250LM	5000K	200~400 MH
CL-HL-125W-30K-E39	125W	E39	16250LM	3000K	200~400 MH
CL-HL-125W-50K-E39-NRW	125W	E39	16250LM	5000K	200~400 MH
CL-PT2-40W-50K-E39	40W	E39	5200LM	5000K	70~125 MH
CL-PT2-40W-30K-E39	40W	E39	5200LM	3000K	70~125 MH

E39-REDUCER

REDUCES E39 BULB TO BE USED IN E26 SOCKET